

NIS
NORTHERN
INDUSTRIAL SUPPLY EST. 1934

RPM
Rubber & Power of Michigan
EST. 1969

WEIMERT
WEIMER
BEARING & TRANSMISSION, Inc.
EST. 1926

WEIMER BEARING
MICHIGAN DIVISIONS

INDUSTRIAL SOLUTIONS
PRODUCT LINE CARD

NORTHERN-INDUSTRIAL.COM

800-888-6474

RPM-INC.COM

800-247-0640

WEIMERBEARING.COM

833-650-0040

BEARINGS

CONVEYOR BELTING

ELECTRONIC MOTION CONTROL

FLUID POWER

MATERIAL HANDLING

MECHANICAL POWER TRANSMISSION

OUR STORY



WEIMER BEARING & TRANSMISSION EST. 1926

Since 1926, Weimer Bearing & Transmission has grown from a single-location industrial engineering firm, to one of the largest, privately held suppliers of mechanical, electrical, pneumatic and hydraulic products in the Midwest. With 30+ stocking locations in 11 states, we strive to serve our customers with local stock and technical expertise.



NIS EST. 1934

The addition of Northern Industrial Supply (NIS) in 2012, added locations in Alpena, Gaylord and Midland, Michigan. Founded in 1934 at the height of the automobile boom, NIS specializes in high-tech electrical motion control, mechanical power transmission, mill supply and fluid control products.



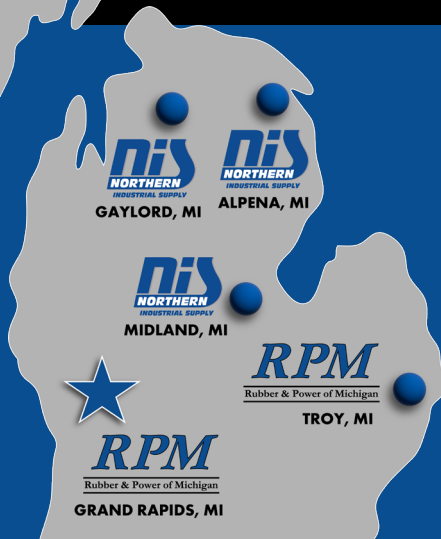
RPM EST. 1969

In 2013, RPM joined forces with Weimer Bearing, adding stocking locations in Grand Rapids and Troy, Michigan. These locations offer a full-service belt fabrication facility and custom rubber production. Since 1969, RPM has specialized in the production, fabrication and distribution of custom conveyor belting, industrial rubber, mechanical, electrical, pneumatic and hydraulic components.



Together we aim to provide world-class service, local inventory, and value-added services that exceed our customers' needs.

MICHIGAN STOCKING LOCATIONS



NIS - ALPENA

1105 S State Ave
Alpena, MI 49707
888-356-9038

NIS - GAYLORD

756 N Otsego Lake Dr
Gaylord, MI 49735
855-883-2775

NIS - MIDLAND

3440 Centennial Dr
Midland, MI 48642
800-888-6474

RPM - GRAND RAPIDS

3420 Broadmoor Ave SE
Kentwood, MI 49512
800-247-0640

RPM - TROY

1725 E 14 Mile Rd
Troy, MI 48083
248-548-7600

IRON MOUNTAIN

W8065 S Hwy US 2 / 141
Iron Mountain, MI 49801
833-650-0040

WHAT MAKES US UNIQUE

**24-HOUR
EMERGENCY SERVICE &
SATURDAY HOURS**

- Privately Held and Independent
- 30+ Stocking Locations in 11 States
- National Coverage and Local Expertise
- Member of Affiliated Distributors (AD) - Over 800 National Locations

OUR SERVICES AND HYBRID CAPABILITIES

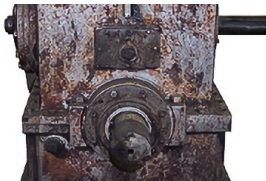
**Premier Bearing and Power
Transmission Supplier**



**Fastener Supply and
Manufacturing**



**Gearbox Repair
Services**



**Industrial Hose Assembly
Shops**



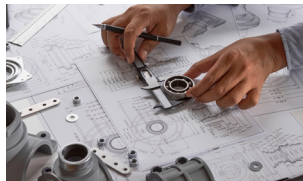
**Industrial Rubber
Fabrication**



**In-House Gearbox
Build Centers**



**On Staff Engineering
and Specialists**



**Fluid Power and
Pneumatic Solutions**



**Custom Metal Fabrication,
Stamping and Assembly**



**Industrial Clutches
Brakes and Repair**



**Industrial Automation
and UL Panel Shop**



Specialty Belting



CUSTOM BELT FABRICATION

**ON-SITE BELT
INSTALLATION
24/7!**

BELTING SOLUTIONS

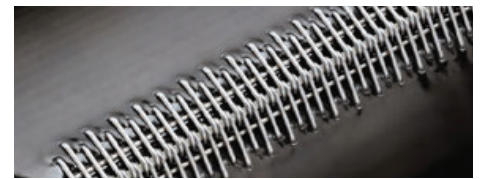
- Conveyor Pulley Lagging and Installation Services
- Custom Hole Punching and Perforation
- Belt Cleaner and Scraper Engineering and Installation
- Elevator Bucket Fabrication and Installation
- Non-Metallic Lacing
- Slitting and Cutting Services
- V-Guide Welding and Fabrication
- Custom Cleat Fabrication
- Mechanical Lacing and Installation
- Endless Vulcanizing and Cold Bonding
- Custom Gaskets, Seals and Pads



Alligator Staple Lace



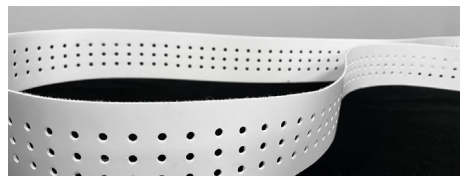
Belt Cleaners



Clipper Lacing



Custom Cleating



Custom Hole Perforation



Custom Seals and Gaskets



Custom V-Guides

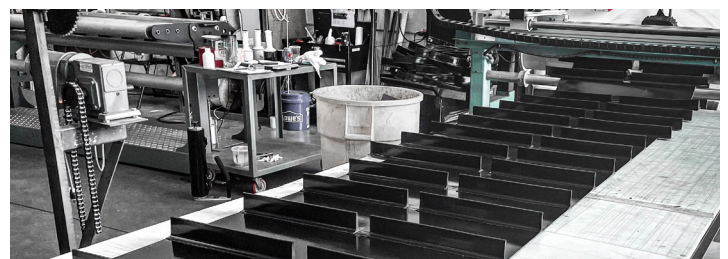


Elevator Buckets



Non-Metallic Lace

RPM'S MICHIGAN BELT SHOP





CUSTOM RUBBER, MACHINING AND ASSEMBLY CAPABILITIES

CUSTOM RUBBER PRODUCTS

- **Molded and Extruded Rubber Products:**

- Grommets, O-Rings, Bumpers and Specials

- **Custom Gaskets and Seals:**

- Die Cut, Hand Fabricated and Water Jet Cut

- **Sponge Rubber Products:**

- Die Cutting Per Specs and Stripping Slit to Width



MACHINING CAPABILITIES



- Rebores
- Broaching
- Keyways
- Drill and Tap
- Bolt Patterns
- Metrics
- Idlers
- Counter Bores
- Cut, Mill, Drill Class "L" Shafting
- Modified PT Components

ASSEMBLIES



- BOM Parts Assemblies
- Customized Parts List
- Private Labeling
- Special Packaging



COMPONENTS



FINISHED PRODUCT



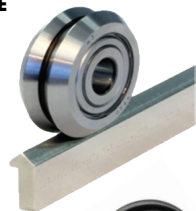
PRODUCTS

BEARINGS

- ANGULAR CONTACT
- BABBITT
- BALL
- BRONZE
- CAM FOLLOWERS
- CERAMIC
- CORROSION RESISTANT
- CYLINDRICAL
- FILAMENT WOUND
- FLANGE
- FOOD GRADE
- GLASS
- GRAPHITE



- HIGH TEMPERATURE
- JOURNAL
- LINEAR
- MACHINE TOOL
- MINIATURE
- NEEDLE
- PILLOW BLOCK
- POLYMER
- PRECISION
- ROD END
- SNW KITS
- SHAFTING
- SLEWING RINGS

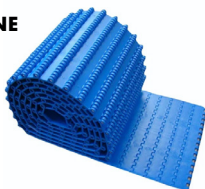


- SPECIALTY
- SPHERICAL
- SPLIT BEARINGS
- SPLIT HOUSING
- STAINLESS STEEL
- TAKE - UP
- TAPERED
- TEFLON
- THERMOPLASTIC
- THRUST
- UNGROUND
- WOOD



CONVEYOR BELTING AND RUBBER PRODUCTS

- HEAVY DUTY RUBBER
- LIGHT DUTY RUBBER
- MONOFILAMENT URETHANE
- MONOLITHIC URETHANE
- NEEDED POLYESTER
- NYLON CORE
- MODULAR PLASTIC



- PROFILE BELTING
- PULLEY LAGGING
- PVC
- SKIRTBOARD
- SOLID WOVEN URETHANE
- TEFLON
- POLYMER



- GROMMETS
- O-RINGS
- BUMPERS
- GASKETS
- SEALS
- SPONGE RUBBER
- VACUUM BELTS



ELECTRICAL

- AC/DC MOTORS
- AC INVERTERS
- BRAKES
- CLUTCHES
- DC CONTROLS
- DEFINITE PURPOSE CONTROLS
- FRACTIONAL HP MOTORS
- EXPLOSION PROOF MOTORS
- ENCODERS
- LIGHT CURTAINS



- LINEAR MOTION CONTROL
- MOTOR CONTROL CENTERS
- MOTOR STARTERS
- PILOT DEVICES
- PREMIUM EFFICIENCY MOTORS
- PROGRAMMABLE CONTROLLERS
- RELAYS
- ROBOTICS



- SAFETY SWITCHES
- SENSORS
- SERVO MOTORS AND CONTROLS
- STEPPER MOTORS AND DRIVES
- TORQUE CONTROL DEVICES
- VECTOR DRIVES





PRODUCTS

FLUID POWER

- AIR PREPARATION
- AUTOMATIC VALVES
- CONTROL VALVES
- CYLINDERS
- FILTERS
- FRL'S



- HOSE AND FITTINGS
- HYDRAULIC CYLINDERS
- MANUAL VALVES
- PANCAKE CYLINDERS
- PNEUMATIC CYLINDERS
- POWER SUPPLIES



- RODLESS CYLINDERS
- ROTARY UNIONS
- SUCTION CUPS
- TIE ROD CYLINDERS
- VACUUM MAINTENANCE
- VACUUM PUMPS



MECHANICAL POWER TRANSMISSION

- ACTUATORS
- BALL SCREWS
- BALL SPLINES
- BELTS
- BRAKES
- BUSHINGS
- CHAIN
- CLUTCHES



- COUPLINGS
- GEARS
- GEAR MOTORS
- GEAR REDUCERS
- HTD DRIVES
- IDLERS
- LEAD SCREWS
- PULLEYS

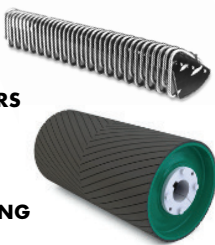


- ROLLER SCREWS
- SERVO GEARHEADS
- SPROCKETS
- TORQUE LIMITERS
- TENSIONERS
- UNIVERSAL JOINTS
- VARIABLE SPEED DRIVES



MATERIAL HANDLING

- AUGERS
- BELT CLEANERS
- BUCKET ELEVATORS
- BUCKETS
- CHAIN
- CONVEYOR BELTING



- CONVEYORS
- DRAG CONVEYORS
- FLAT WIRE BELTING
- HEAD / TAIL PULLEYS
- PLASTIC MODULAR BELTING
- ROLLERS



- SCREW CONVEYORS
- TABLE TOP CHAIN
- TAKE-UP UNITS
- WASTE WATER TREATMENT
- WEAR STRIPS
- WIRE MESH BELTING



SPECIALTY PRODUCTS

- ADHESIVES
- ALUMINUM FRAMING
- BATTERIES
- BEARING ISOLATORS
- BEARING LUBRICATORS
- BEARING PULLERS
- CASTERS
- CABLE CARRIERS
- CABLE CYLINDERS
- CHAIN BREAKERS
- FOOD GRADE PRODUCTS
- GAS SPRINGS



- HAND TOOLS
- INDUSTRIAL ROBOTS
- KEYSTOCK
- KNOBS AND HANDLES
- LASER ALIGNMENT TOOLS
- LEVELING PADS
- LOAD CELLS
- LUBRICATION SYSTEMS
- MAINTENANCE TOOLS
- MANIFOLDS
- METRIC COMPONENTS



- O-RINGS
- OIL SEALS
- PROTECTIVE BELLOWS
- RETAINING RINGS
- SHAFT COLLARS
- SHIMS
- SORBENT AND SPILL CONTROL PRODUCTS
- SPINDLES
- WAY COVERS
- WEAR STRIPS





BEARING MANUFACTURERS

- ACCURATE BUSHING
- AETNA BEARING
- ALINABAL
- AMERICAN SLEEVE BEARING
- AMI
- ANDREWS
- ASAHI BEARING
- BARDEN
- BERLISS
- BISHOP - WISECARVER
- BLUE BRUTE
- BOSTON GEAR
- BOWER / BCA
- BROWNING
- BUNTING
- C.E. GOBEIL
- CARTER MANUFACTURING
- CHAMPION
- CONSOLIDATED BEARINGS
- COOPER BEARINGS
- CRAFT SPLIT BEARINGS
- DODGE
- DU BEARING
- DUALVEE
- DURALON
- ECONOMY BUSHING
- EDT
- ELGES
- EWELLIX
- FAFNIR
- FAG BEARINGS
- FERSA
- FK BEARING
- FRANTZ BEARING
- FYH BEARING
- GENERAL BEARING
- GGB / GARLOCK
- GRAPHALLOY
- HEIM
- HEPCO
- HIWIN
- HUB CITY
- HUDSON BEARING
- HYATT BEARING
- IDC BEARING
- IGUS
- IKO BEARING
- INA
- IPTCI
- ISOSTATIC
- JILSON
- JONES BEARING
- JTEKT
- KAYDON
- KETCHIE HOUSTON
- KOYO
- LEE CONTROLS





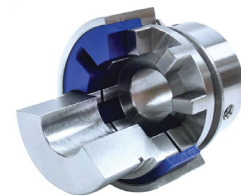
- LINK-BELT
- LM76
- MCGILL
- MICROPOLY / PHYMET
- MIETHER BEARING
- MILLER BEARING
- MISUMI
- MOLINE
- MRC
- NACHI BEARING
- NATIONAL ROD END
- NB LINEAR
- NICE BEARING
- NKE
- NSK LINEAR
- NTN
- OILES
- ORS BEARING
- OSBORN
- PACIFIC BEARING
- PCI
- PEER BEARING
- POBCO
- POLYGON
- PT INTERNATIONAL
- QA1
- QM BEARING
- RBC
- REGAL REYNORD
- RELIABLE BRONZE
- REXNORD
- ROLLON
- ROLLWAY
- ROYERSFORD
- SCHAEFFLER
- SCHATZ
- SCHEERER
- SEALMASTER
- SILVERTHIN
- SKF
- SMITH
- SNR
- SOLIDUR
- SOLUS
- SPADONE ALFA
- SYSTEM PLAST
- THK
- THOMSON
- TIMKEN
- TORRINGTON
- TRIANGLE
- TYSON
- UTA
- VALU GUIDE
- WOODEX
- ZKL BEARING

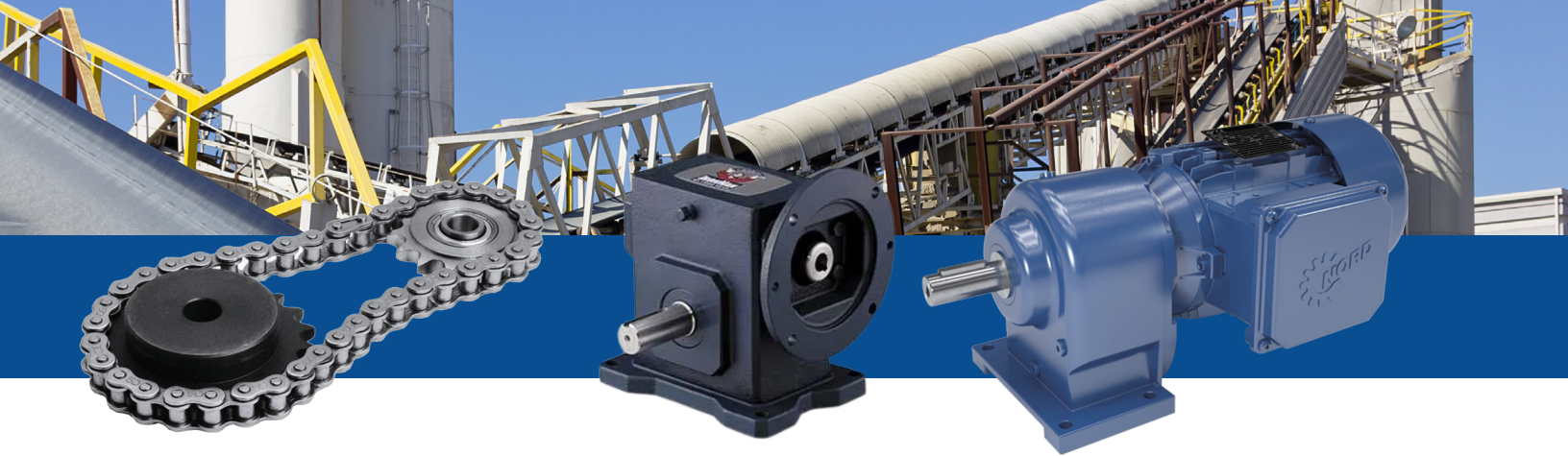


MECHANICAL POWER TRANSMISSION MANUFACTURERS

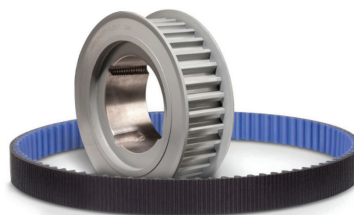
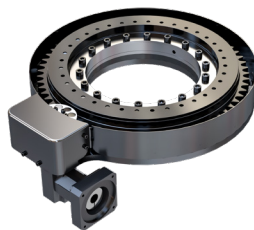


- ACCURATE GEAR
- ACME CHAIN
- ACSI CONVEYOR
- ALLIED-LOCKE
- ALLING LANDER
- ALTRA
- AMERICAN PULLEY
- AMETRIC
- AMMEGA
- AMMERAAL BELTECH
- ANDANTEX
- ATRA-FLEX
- AUTOGARD
- BANDO
- BELDEN
- BENZLERS
- BISON GEAR
- B-LOC
- BONFIGLIOLI
- BOSTON GEAR
- BRAD FOOTE
- BRECOFLEX
- BREVINI
- BREWER MACHINE
- BROTHER INTERNATIONAL
- BROWNING
- BRYANT
- CANDY CONTROLS
- CARLISLE
- CCI
- CHANTLAND PULLEY
- CLEVELAND GEAR
- CLIMAX COLLARS
- CONE DRIVE
- CONTINENTAL / CRP
- CONVEYOR COMPONENT SYSTEMS
- CURTIS MACHINE
- DAIDO
- DALTON GEAR
- DANAHER
- DAVID BROWN
- DAYCO
- DAYTON SUPERIOR
- DIAMOND CHAIN
- DICTOMATIK
- DIEQUA
- DODGE
- DORRIS
- DOUGLAS MANUFACTURING
- DRIVES INC.
- DUFF-NORTON
- DURST
- DYNACORP
- DYNA-VEYOR
- EAGLE BELTING
- EFSON
- ELECTRA-GEAR
- EURODRIVE-SEW
- EXLAR
- FALK
- FENNER DRIVES
- FOOTE-JONES
- FORMSPRAG
- G&G MANUFACTURING
- G.L. HUYETT
- GATES
- GATES MECTROL
- GERBING
- GOODYEAR EAGLE
- GRANT GEAR
- GREAT LAKES INDUSTRIES
- GROVE GEAR
- GUARDIAN
- HABASIT / KVP
- HELICAL
- HERCULES GEAR
- HILLIARD
- HI-LO PULLEY
- HITACHI
- HORTON
- HUB CITY
- HUCO DYNATORK
- IDC-USA
- IGUS LINEAR
- INA LINEAR
- INTERROLL
- JASON
- JAURE
- JEFFREY / WHITNEY
- JERVIS WEBB
- JM CLIPPER
- JOYCE
- KHK
- KOP-FLEX
- KTR
- KWS



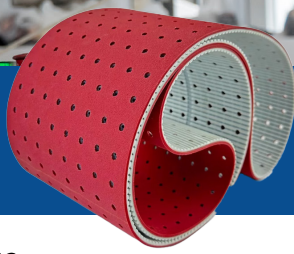


- LEE CONTROLS
- LENZE
- LINN GEAR
- LOVEJOY
- MACH III
- MARTIN SPROCKET & GEAR
- MASKA
- MASTERDRIVE
- MAUREY
- MICRON
- MILWAUKEE GEAR
- MISUMI
- MORSE
- MOTOVARIO
- NATIONAL
- NB LINEAR
- NEXEN
- NOLU
- NOOK
- NORD GEAR
- NORTH AMERICAN PULLEY
- NSK LINEAR
- NSW BELTING
- OMNI METALCRAFT
- OVERLY HAUTZ
- PACIFIC / PBC LINEAR
- PARKER
- PCI
- PEER CHAIN
- PFAFF
- POBCO
- POLY HI SOLIDUR
- PRECISION PULLEY
- PT INTERNATIONAL
- QM
- R+W
- RADICON
- RAFFEL SYSTEMS
- RALPHS PUGH
- RAMSEY
- REEVES
- REGAL REXNORD
- REGINA
- RELIANCE
- RENOLD
- REXNORD
- RINGFEDER
- RINGSPANN
- ROCKFORD BALL SCREW
- ROSSI
- ROSTA
- ROTEX
- ROYERSFORD
- RULAND
- SAGINAW
- SENQCIA
- SEW
- SHIMPO
- SIER-BATH
- SOLUS
- SPARKS MOTORIZED
- PULLEY
- SPEED CONTROL
- STAFFORD
- STANDARD LOCKNUT
- STEELCRAFT
- STERLING
- STOBER DRIVES
- SUMITOMO
- SUPERIOR GEARBOX
- SYSTEM COMPONENTS
- SYSTEM PLAST
- TANDLER
- TB WOODS
- TEXTRON
- THOMAS SCREW CONVEYOR
- THOMSON
- TIMKEN
- TRANSCOM
- TRANTORQUE
- TRIANGLE MANUFACTURING
- TWIFLEX
- U.S. TSUBAKI
- UNI CHAIN
- UNION CHAIN
- VALU GUIDE
- VAN DER GRAAF
- VAN ZEELAND
- VON RUDEN
- W.C. BRANHAM
- WEBSTER
- WHITTET-HIGGINS
- WM BERG
- ZERO MAX

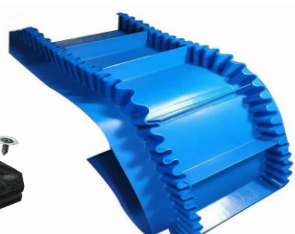
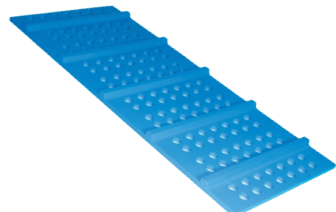




CONVEYOR BELTING AND COMPONENTS MANUFACTURERS

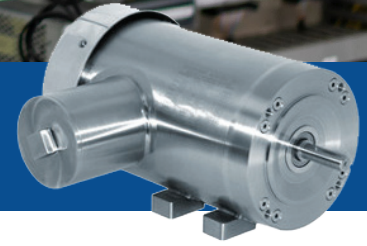


- ACSI
- AFC
- ALLIGATOR
- AMERICAN FABRIC FILTER
- AMMEGA
- AMMERAAL-BELTECH
- APACHE
- ASHWORTH
- AUDUBON
- BANDO
- BEHA
- BELT CONCEPTS
- BENETECH
- BLICKLE
- BRECOFLEX
- BRYANT PRODUCTS
- CAMBELT
- CAMBRIDGE
- CAROLINA BELTING
- CHANTLAND
- CHIORINO
- CLEAR EDGE
- CROWN PLASTICS
- DERCO
- DIVERSIFIED PLASTICS
- DOUGLAS MANUFACTURING
- DYNAVEYOR
- EAGLE
- EFSO
- ELES
- ENDURA-VEYOR
- EXTREMULTUS
- FABRITEX
- FENNER DRIVES
- FIBERFLON
- FLEXCO
- FORBO
- GATES MECTROL
- GKD
- GOODMAN
- GOODYEAR/VEYANCE/CONTINENTAL
- GRT RUBBER TECHNOLOGIES
- GSM FILTRATION
- HABASIT (HABASIT/KVP/GLOBE)
- ICL AMERICA
- INO
- INTERROLL
- INTRALOX
- IZUMI
- JONGE POERINK
- KEYSTONE
- KURIYAMA
- LIGHT WEIGHT BELTING
- LUMSDEN
- MARTIN ENGINEERING
- MARTIN SPROCKET & GEAR
- MARYLAND
- MAXI-LIFT
- MECTROL
- MEGADYNE
- MODUTECH
- MOL BELTING
- MOVEX
- NGI
- NITTA BELTING
- NORTH AMERICAN PULLEY
- NOVEX
- OMNI METALCRAFT
- OPTIBELT
- PAGE BELTING
- PASSAIC
- PCI
- PENN WIRE PRODUCTS
- POBCO
- POLYTEC
- PRAIRIE BELTING
- PRICE RUBBER
- PROBANDAS
- RALPHS-PUGH
- REGAL REXNORD
- REXNORD
- RIVER VALLEY SUPPLY (RVS)
- RPM BELTING
- SAFARI
- SAMPLA
- SHINGLE BELTING
- SIEGLING
- SIT INDEVA
- SOLUS
- SYSTEM PLAST
- TACONIC
- TAPCO
- TITAN
- TRANSILON
- TRICO
- UBR
- UNI
- UNIBAND
- VALU GUIDE
- VAN DER GRAAF
- VAN GORP
- VIS USA
- VOLTA
- WIRE BELT

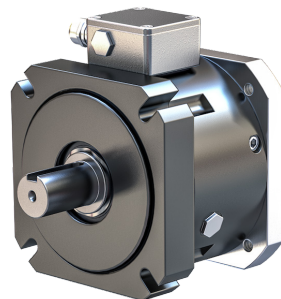




ELECTRICAL / MOTION CONTROL MANUFACTURERS



- **ABB**
- **AC TECH**
- **ADVANCED CONTROLS**
- **AEG**
- **BACO**
- **BALDOR ELECTRIC**
- **BARDAC**
- **BENSHAW**
- **BIRCHER REGLOMAT**
- **BISON**
- **BLUFFTON**
- **BOSTON GEAR**
- **BROTHER**
- **CEDES**
- **CENTURY**
- **CONTRINEX**
- **CONTROL TECHNIQUES**
- **COOPER INTERCONNECT**
- **DART**
- **DELTA**
- **DINGS**
- **DYNACORP**
- **EE CONTROLS**
- **ELECTRO SENSORS**
- **ELECTROID**
- **ENCLOSURE SOLUTIONS**
- **EUROTHERM**
- **EXLAR**
- **FURNAS ELECTRIC**
- **GROSCHOPP**
- **HITACHI**
- **HTM SENSORS**
- **INERTIA DYNAMICS**
- **INVERTEK DRIVES**
- **KEBCO**
- **KF GROUP**
- **LAFERT**
- **LEESON ELECTRIC**
- **LENZE**
- **LINCOLN ELECTRIC**
- **LS ELECTRIC**
- **MARATHON**
- **MOTOR SPECIALTY INC**
- **NEXEN**
- **NORD GEAR**
- **NORDIC CONTROLS**
- **NORTH AMERICAN ELECTRIC**
- **ORIENTAL**
- **ORIX FANS**
- **PACIFIC SCIENTIFIC**
- **PINNACLE**
- **PIZZATO**
- **RAE**
- **REER**
- **REES**
- **REGAL REXNORD**
- **RELIANCE**
- **REULAND**
- **REXNORD**
- **SALZER**
- **SCHMERSAL**
- **SIEMENS**
- **SINGULAR**
- **SPRECHER & SCHUH**
- **STAINLESS MOTORS INC**
- **STEARNS**
- **STERLING ELECTRIC**
- **TATUNG**
- **TELCO SENSORS**
- **THERMAL EDGE**
- **THOMSON**
- **TOSHIBA**
- **TURCK**
- **TWIFLEX**
- **VACON**
- **VAN DER GRAAF**
- **WARNER**
- **WEG**
- **WERMA**
- **WORLD WIDE ELECTRIC**



FLUID POWER MANUFACTURERS



- ADAPTALL
- AIGNEP
- ALLENAIR
- ANCHOR FLUID POWER
- ANDERSONS METALS CORP
- ANVER
- BARCO
- BD CYLINDER PRODUCTS
- BIJUR
- BITORQ
- BOLTING SYSTEMS
- BRADFORD
- BRENNAN
- CKD
- CLIPPARD + COMPACT AUTOMATION
- CONTINENTAL HOSE
- CONTINENTAL HYDRAULICS
- COVAL
- DAMAN MANIFOLDS
- DAYCO HOSE
- DEKKER VACUUM
- DEUBLIN
- DIXON
- DMIC
- DYNAMIC FLUID COMPONENTS
- FABCO AIR
- FESTO
- FITTINGS UNLIMITED
- FLOW EZY FILTERS
- FLUIDYNE
- GOODYEAR/VEYANCE/CONTINENTAL
- GRANZOW
- HANNA
- HERCULES SEALING PRODUCTS
- HUMPHREY CYLINDER
- HYTEC
- HYVAIR
- IDEAL HOSE CLAMPS
- IMI NORGEN
- JASON HOSE
- LEHIGH FLUID POWER
- LOVEJOY
- MANASTRIP
- MILWAUKEE CYLINDER
- MULTIPower CYLINDER
- NACHI HYDRAULICS
- NEW AGE INDUSTRIES
- NEXEN
- NOPAK
- NORTHMAN FLUID POWER
- NORTHPOINTE INDUSTRIES
- PANCAKE AIR CYLINDER
- PISCO
- PNEUFORCE
- PNEUMATIC CYLINDERS & COUPLERS
- POLYCONN
- PREVOST
- REGAL REYNOLD
- REPUBLIC MANUFACTURING
- ROSS CONTROLS
- SMART PRODUCTS
- SPX / POWER TEAM
- STARCYL
- TOMPKINS
- UNIVERSAL COMPONENTS INC
- VACUFORCE
- W.C. BRANHAM
- WINTERS INSTRUMENTS
- YATES CYLINDERS



SPECIALTY MANUFACTURERS



- BARCO
- BENETECH
- BI-TORQ
- BIJUR
- BOSS
- BRADFORD
- BRENNAN
- COBRA SOLID LUBE
- COLSON
- CRC INDUSTRIES
- DICTOMATIK
- DIVERSIFIED PLASTICS
- DIXON
- ELESA
- ENERGIZER
- FARVAL
- FLEXAUST
- FRAME-WORLD
- GILMAN USA
- GORTITE
- HELWIG CARBON
- HERMES
- HITACHI ENVIRONMENTAL
- IDEAL
- IGUS
- INTERLUBE

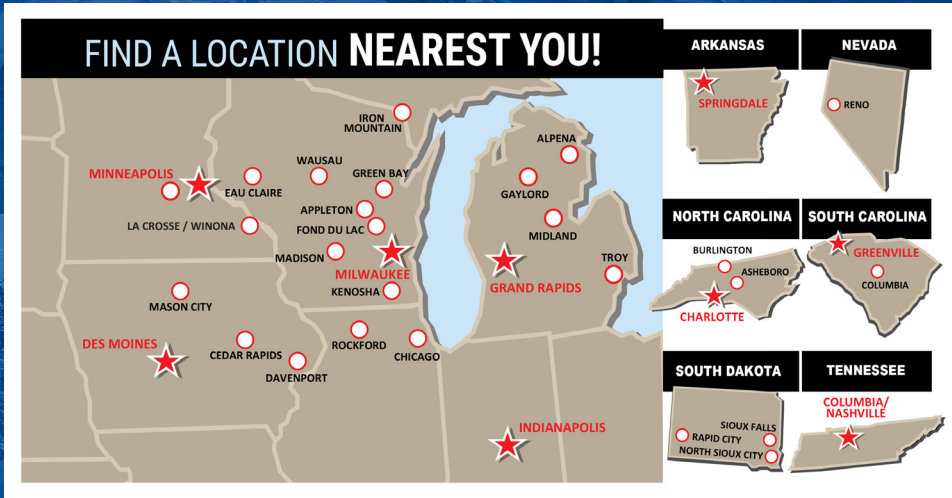
- INTERNATIONAL BELLOWS
- INTERNATIONAL GAS SPRINGS
- JASON HOSE
- JERVIS WEBB
- KABELSCHLEPP
- KIMBALL MIDWEST
- KING TONY
- KIPP
- KLUBER
- KRYLON
- KURIYAMA
- KYODO YUSHI
- LOCKNLUBE
- LOCTITE
- LUBESITE
- LUBRICATION TECHNOLOGIES
- LUBRIPLATE
- MACH III
- MACHINE GUARD & COVER
- MANASTRIP
- MARTIN VIBRATION SYSTEM
- MASTERDUCT
- MAUDLIN
- MICROPOLY / PHYMET
- MOLECULOC
- NACHI ROBOTIC SYSTEMS

- ND INDUSTRIES
- NEVER-SEEZ
- NEXEN
- PAYSON
- PERMA
- POSI-LOCK
- PREVOST
- PULSARLUBE
- RINGSPANN
- SCRUBS
- SIA
- SIMATEC
- SPILL TECH
- SPX
- STRAHMAN
- SUPERKLEAN
- TFCO
- THERMAL EDGE
- TRICO
- US SEAL
- UTA
- VIBRA-TITE
- VSM
- WELKER
- WISCONSIN STAMPING





RPM
Rubber & Power of Michigan



MICHIGAN STOCKING LOCATIONS

NIS - ALPENA

1105 S State Ave
Alpena, MI 49707
888-356-9038

NIS - GAYLORD

756 N Otsego Lake Dr
Gaylord, MI 49735
855-883-2775

NIS - MIDLAND

3440 Centennial Dr
Midland, MI 48642
800-888-6474

RPM - GRAND RAPIDS

3420 Broadmoor Ave SE
Kentwood, MI 49512
800-247-0640

RPM - TROY

1725 E 14 Mile Rd
Troy, MI 48083
248-548-7600

WEIMER - IRON MOUNTAIN

W8065 S Hwy US 2 / 141
Iron Mountain, MI 49801
833-650-0040

ADDITIONAL STOCKING LOCATIONS: AR, IN, IA, MN, NC, NV, SC, SD, TN, WI

REQUEST A QUOTE TODAY | 24-HOUR EMERGENCY SERVICE & SATURDAY HOURS AVAILABLE

NIS: 800-888-6474 • sales@northern-industrial.com • northern-industrial.com

RPM: 800-247-0640 • service@rpm-inc.com • rpm-inc.com

WEIMER MI: 833-650-0040 • sales@weimerbearing.com • weimerbearing.com



EXPLORE INDUSTRIAL SOLUTIONS AT:
WEIMERBEARING.COM

